



YELICO ENGINEERING



Company Profile – Industrial Services

Electrical & Instrument Installation
Pipelines Valves & Instrumentation Calibration

Shutdown Project • Preventive Inspection • Scheduled Maintenance • Routine Services





Our Vision

We aim to be the most competitive and the most productive service organization. Our core competencies in installation, inspection, calibration, testing and certification are being continuously improved to be best-in-class. They are the heart of what we are. Our chosen markets will be solely determined by our ability to be the most competitive and to consistently deliver unequalled service to our customer all over the industries.

Our Passion

We seek to be recognised by our passion, integrity, entrepreneurialism and our innovative spirit, as we continually strive to fulfil our vision. These values guide us in all that we do and are the bedrock upon which our organisation is built



Introduction

YELICO ENGINEERING SDN BHD (YES) provides solution for all sectors with E&I Installation, Mechanical Valves, Instrumentation calibration and maintenance. Yes offering third-party accreditation services for testing and calibration laboratories, its facility's Testing and Calibration Laboratory has been awarded ISO/IEC 17025:2005 accreditation from National Unified Laboratory Accreditation Scheme, known as Skim Akreditasi Makmal Malaysia (SAMM). ISO accreditation demonstrates that Yelico has successfully completed the ISO evaluation process, including an assessment of laboratory's compliance with the International laboratory Accreditation Co-operation (ILAC). Yelico was issued SAMM Certificate No.716 on June 8, 2015 and holds ISO 9001:2008 certifications. Our clients are multinational leaders in oil and gas, petroleum, petro-chemical as well as other light and heavy industries.

Yelico is an engineering and construction business specialist in electrical and instrumentation service for over 20 years and offering comprehensive construction services via traditional or design and build procurement. In addition, our valve maintenance and instrumentation calibration service assures the accuracy of the instruments and consistent process control. We have extensive experience in delivering instrument and valve outage and shutdown project across the industries. We have proven ourselves to be adaptable, responsive and accountable in resolving ground-level issues critical to successful completion of routine maintenance services and shutdown jobs.

The company's high level of proficiency and reliability has led to repeat business and long-term partnerships with a portfolio of appreciative clients.

We provide competitive advantage, drive sustainability and deliver trust. At YES, we are continually pushing ourselves to deliver innovative services and solutions that help our customers move their businesses forward.

INSTRUMENTATION CALIBRATION

We recognize the importance of calibration and have tailored the company policies and procedures to ensure our customer receive the highest level of quality and accuracy of the process requires.

Instrumentation Calibration

Instrument Calibration is a necessary and important part of any instrument system. The accuracy of the information produced by any instrument is dependent on it. YES provides a calibration services for a range of instruments used for measuring pressure, temperature and simulation devices. We recognize the importance of calibration and have tailored the company policies and procedures to ensure our customer receive the highest level of quality and accuracy of the process requires.

We have a full, experienced staff of highly qualified Instrument Supervisors and Technicians to perform the calibration and loop check, are trained from NML (National Metrology Laboratory). YES own over 200 individual pieces of NML traceable calibration and test equipment. This inventory is meticulously logged, tracked and evaluated per our Quality Manual's documented procedures. All equipment is either annually or routinely calibrated with NML traceable. We are continuously upgrading our standards that facilitate our commitment to maintain a state of art environment. Our labs are environmentally controlled for humidity as well as temperature all year round. We dedicated to providing our clients the best service available at the lowest possible cost.



■ Well-trained technician performing a pressure recorder calibration.

Capabilities

Pressure

- Analogue and digital Gauges
- Recorders and Controllers
- Pressure Switches
- Pressure Transmitter
- Differential Pressure Transmitter
- Vacuum / Absolute Transmitter

Temperature

- Thermometers (Mechanical)
- Recorders and Controllers
- Thermocouples
- Temperature switch
- Temperature Transmitter
- RTD's / Platinum Resistance Thermometer (PRT)

Level

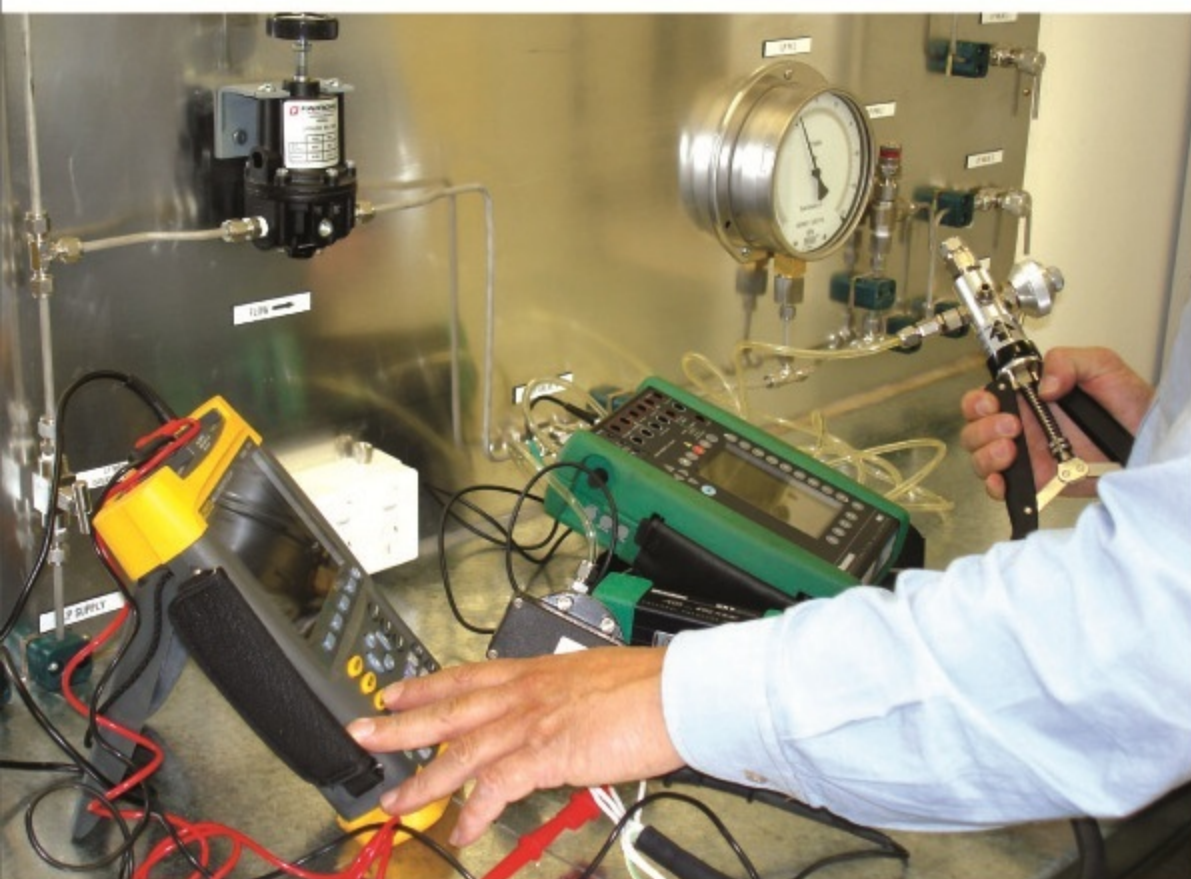
- Displacer Lever Transmitter
- Radar / Ultrasonic Level
- Tank Gauge

On-site Calibration

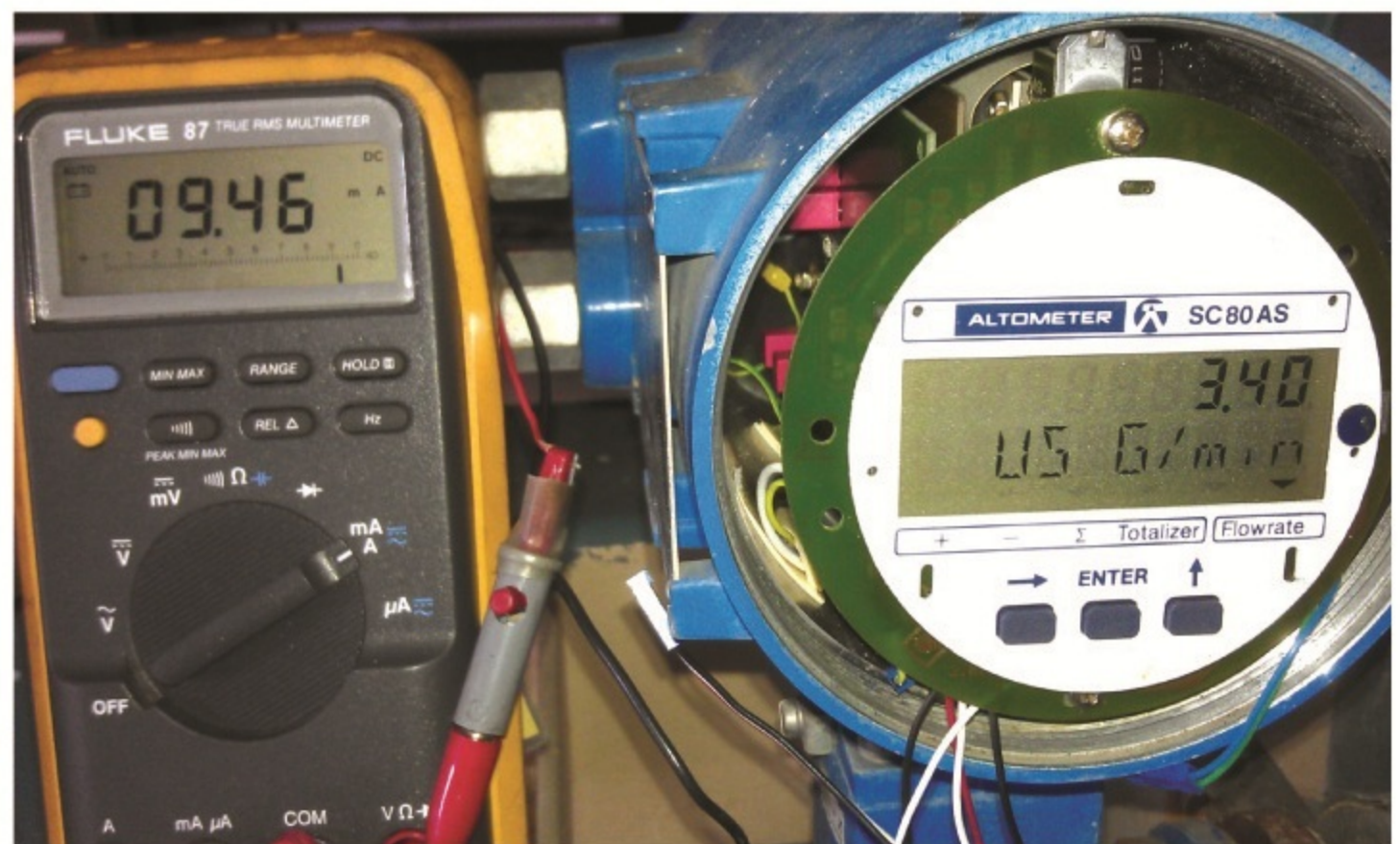
We provide onsite calibration service in all 13 states in Malaysia. Custom Calibration specializes in on-site calibration. Our experienced team will work seamlessly at customer site while the plant operates uninterrupted, minimizing equipment downtime and costly delays in manufacturing. On-site calibration is the most efficient and cost-effective way to keep the company running while ensuring the quality of customer's product.



■ Fully equipped service teams offer the advantage of on-site calibration.



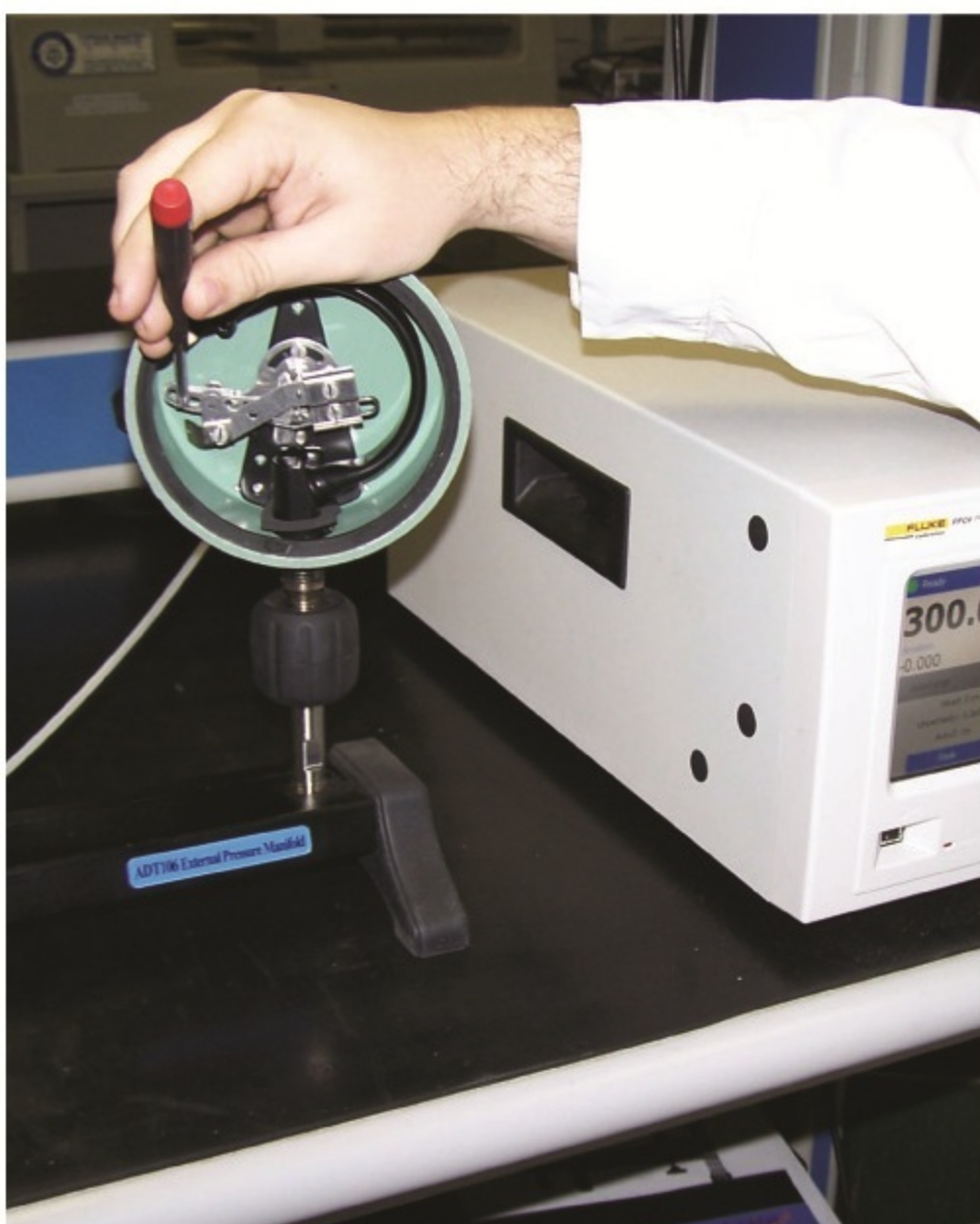
■ Test gauge calibration.

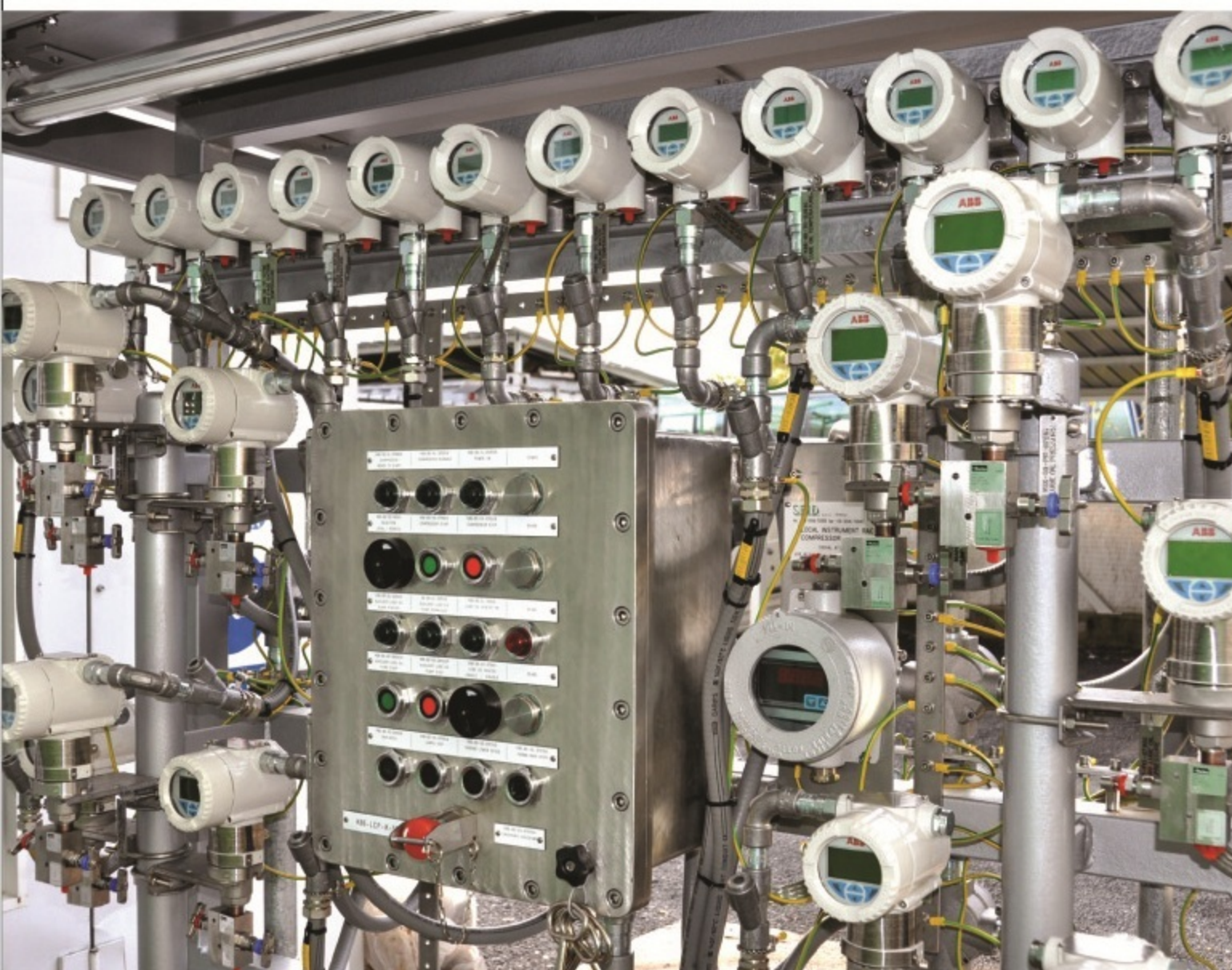


■ On-site instrument calibration.

Adjustment of Measuring Instruments

In the case of a deviation of measurement results from the required limit values of a measuring instrument, and upon the request by the customer, we could adjust the measuring instrument or repair it. YES also provide the re-ranging the instrument with the customer required ranges. To range an instrument means to set the lower and upper range values so it response with the desired sensitivity to changes in input. For example, a pressure transmitter set to a range of 0 to 200 psi (0 psi = 4 mA output; 200 psi = 20 mA output) could be re-ranged to respond on a scale of 0 to 150 psi (0 psi = 4 mA; 150 psi = 20 mA). And for the analog instruments, re-ranging could (usually) only be accomplished by re-calibration, since the same adjustments were used to achieve both purpose.





■ Loop checking.

Commissioning & Shutdown

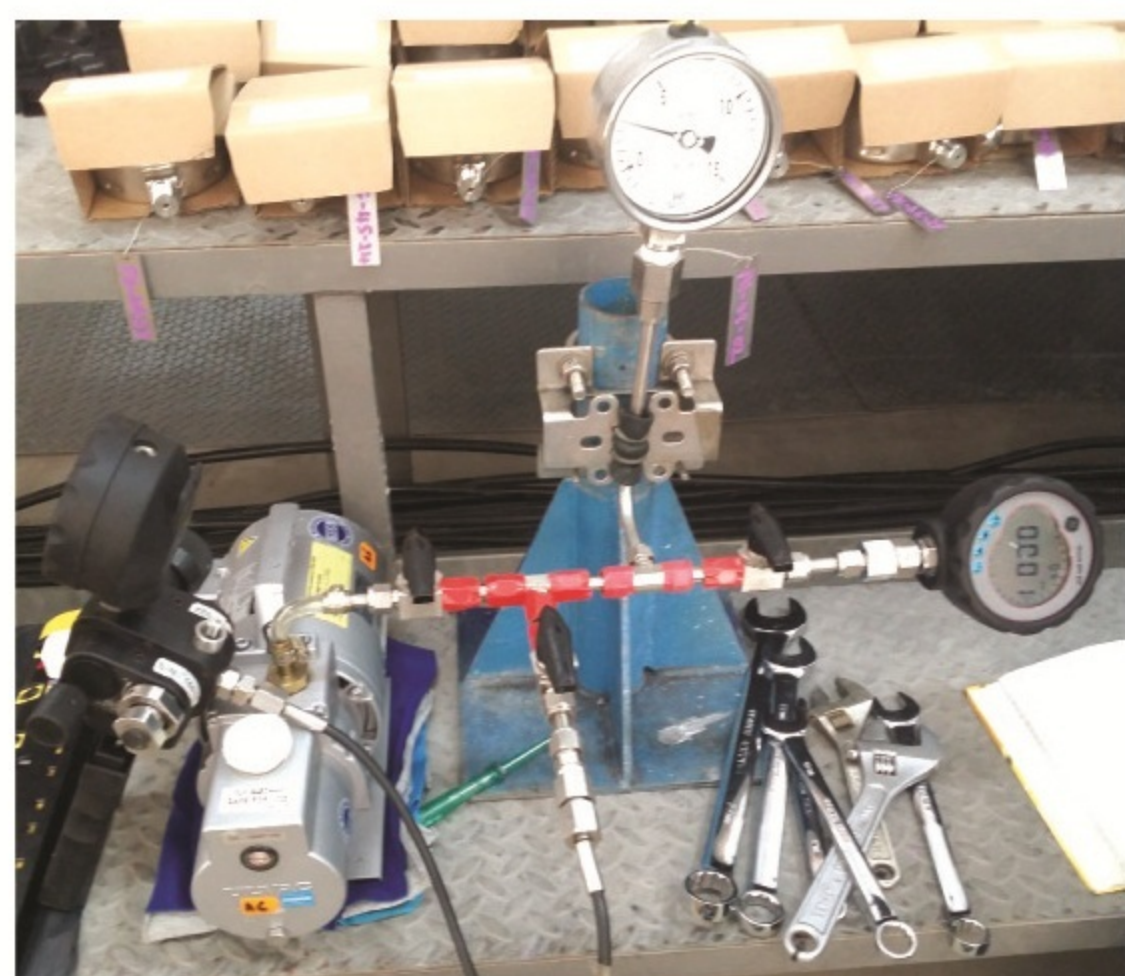
YES also available for commissioning or shutdown expertise, with experience in the following:

- Pre-commissioning and start up
- Loop checking and calibration
- Loop tuning
- Instrument and valve maintenance
- Troubleshooting

Experienced commissioning technicians provides thorough inspection, verification, calibration, and testing of complex control systems, to insure problem free startup of facility instrumentation, electrical, and mechanical systems.



■ Temperature gauge calibration.



■ Onsite pressure/vacuum gauge calibration.



■ Control valve tuning/calibration.

Valve Servicing

Yelico's vision is far from being a valve overhaul and general Engineering Company. In the field of valve servicing, Yelico stands out as a specialist company offering professional services of the highest quality.

Our valve repair solution is a unique combination of highly-skilled technicians that provide on-site, emergency and scheduled repair services or routine workshop repair.

We have acquired a wealth of experience in overhauling every type of valve from every area of industrial, commercial and marine installations. Services range from maintenance/inspection right through to general overhauls to all type of pipeline valves, control valve & actuator, butterfly valves, breather valve, safety valves either on site or in our own workshops.

Resources

- Dedicated engineering support located within YES facility
- All full-time field engineers, supervisors and technicians are trained to carry out diagnostic bench tests on valves in accordance with international (API 6D/598, ISO 14313, etc.)
- Dedicated support staff comprising
 - Planning
 - Resourcing
 - Project management
 - HSEQ
 - Engineering
 - Logistics
- Continuous investment in training, tooling and equipment
- Site specific valve Quality Assurance (QA) Management Database



Our valve repair solution is a unique combination of highly-skilled technicians that provide on-site, emergency and scheduled repair services or routine workshop repair.

Our experience has demonstrated that the following key differentiators have added significant value to our existing customers.

Capabilities

- Assessment of the actual valves condition with corresponding documentation (irrespective of the manufacturer)
- Body tests (Hydraulic Pressure Test) on valve covers and/or valve seats
- Flanged joints are inspected and restored to ANSI/API specifications
- On-site valve replacement
- Overhaul/repair of the removed valve on-site or in our workshops
- Machining fitted valves by mobile grinding machinery and lathes
- Hydraulic pressure tests on removed valves by using test rig
- Safety valve calibrated on the test rig
- Procurement of spare parts



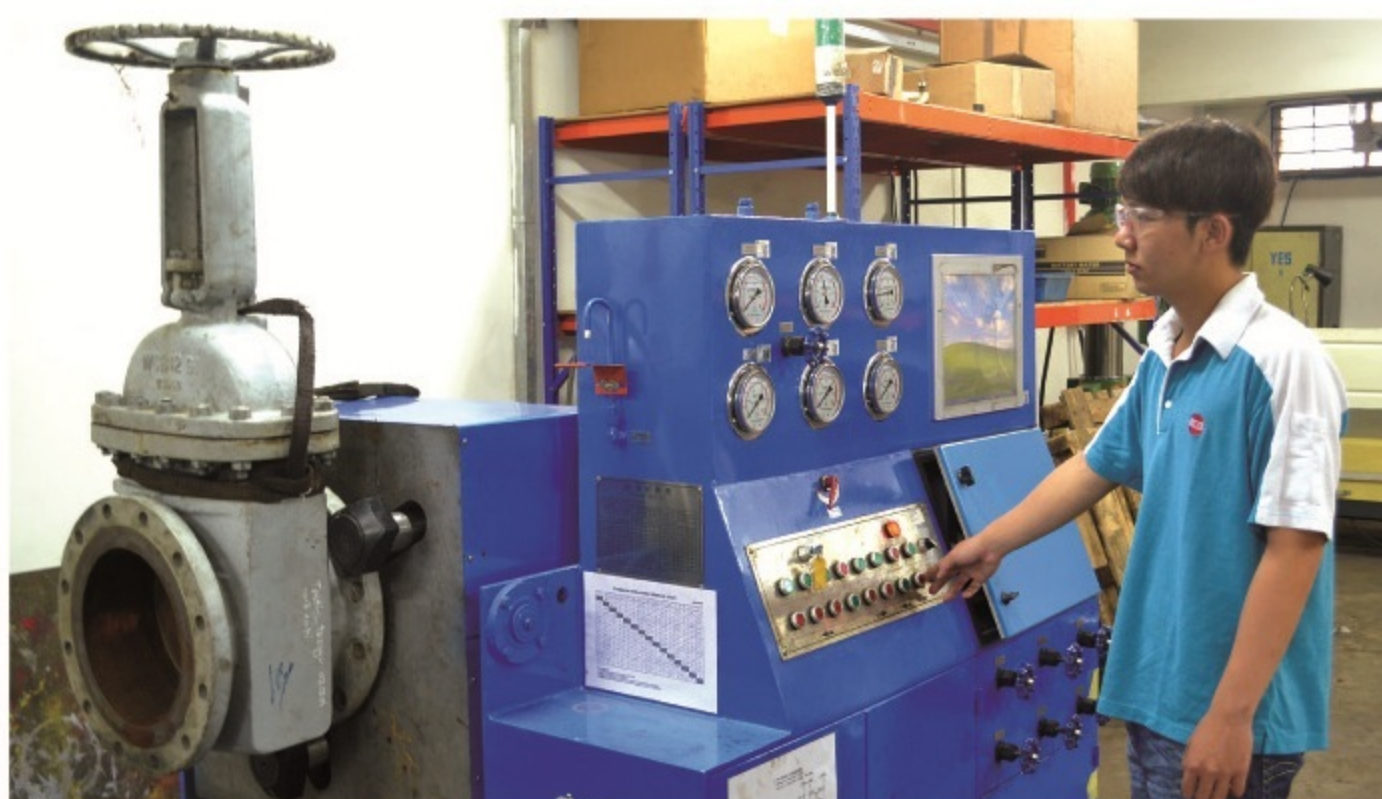
Maintenance and Instrument services include calibration, repair and troubleshooting services for process instruments and pipeline valves, plant maintenance and shut down calibration and valve overhaul works. We provide contract services including 24 x 7 standby services.



- Calibration control valve is needed to ensure that the control valve actuation can produce responses as desired by the control system in a process.

Valve Testing

Test unit for testing the integrity and performance of any type of valve with Flange-, Thread- or Weld connections in the range up to 1000 bar / 14,500 psi.



All Valves are stripped to component their basic form, cleaned by suitable methods, and thereafter inspected to ensure they are within manufacturers' specification. Flange faces are carefully inspected for damage and machined if required. Seat and Disc faces are machined if required and then lapped to ensure a perfect seal. All packing's and gaskets are replaced with material suitable for the application. Valves are then assembled; pressure tested and painted in accordance with our clients requirements.

Our capabilities include overhauling, repair, re-engineering, calibration and testing of all makes, models and type of:

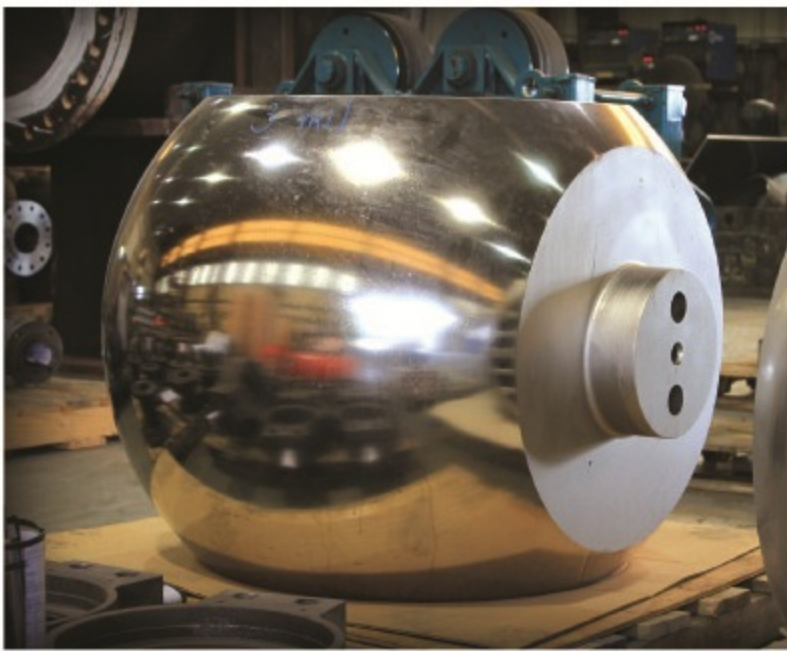
- Gate valves
- Parallel slide valves
- Globe valves
- Check Valves
- Ball Valves
- Plug Valves
- Butterfly Valves
- Diverter Valves
- Safety Relief Valves
- Breather Valves
- Control Valves
- Electric, hydraulic, pneumatic, gas over oil type of actuators

Safety Valve Testing

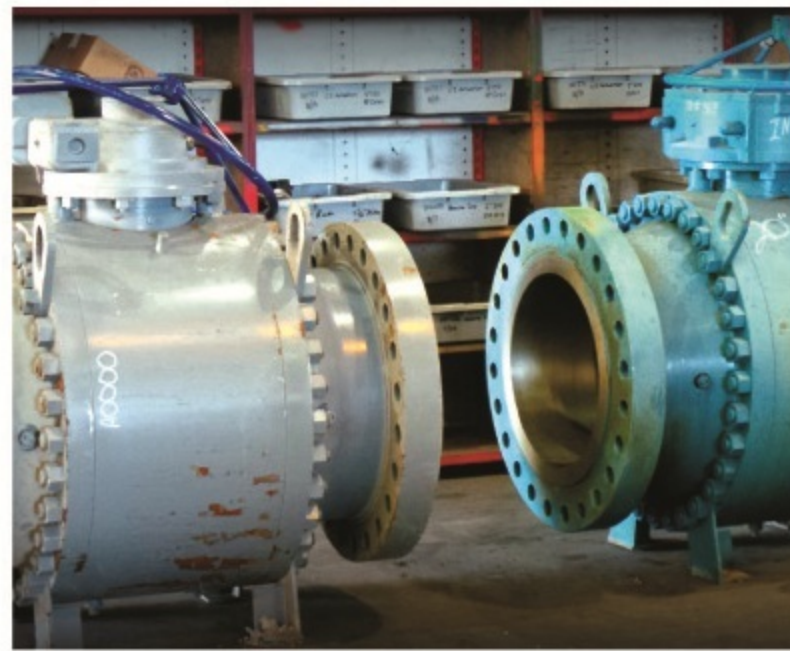
Test units for testing and readjusting the set pressure, seat tightness and performance with gas and liquid in the range of 0 – 160 bar.



Delivered across all valves and controls by experienced managers and onsite engineers. Backed up by fully equipped workshops.



■ Ball Valve Coating



■ Valve Reconditioning Services



■ Onsite valve installation



■ Control Valve Calibration



■ Technical Inspection



■ Hydraulic Testing



■ Valve Test Bench Facility



■ Leakage Repair Services



■ Valve Seat Lapping



E & I INSTALLATIONS

Yelico has experience with installing systems in oil and gas, refining, manufacturing, material handling, and chemical industries.

E & I Installations

The heart of Yelico's work remains the basic of industrial Electrical and Instrumentation (E&I) Installations. Yelico offer comprehensive electrical engineering, project management and construction services through our team of qualified and experienced personnel, specializing in industrial electrical, communications, instrumentation, power, and control systems. Yelico has experience with installing systems in oil and gas, refining, manufacturing, material handling, and chemical industries. From the installation of conduit, cable tray, wiring, tubing, instruments, and equipment to final testing and startup.

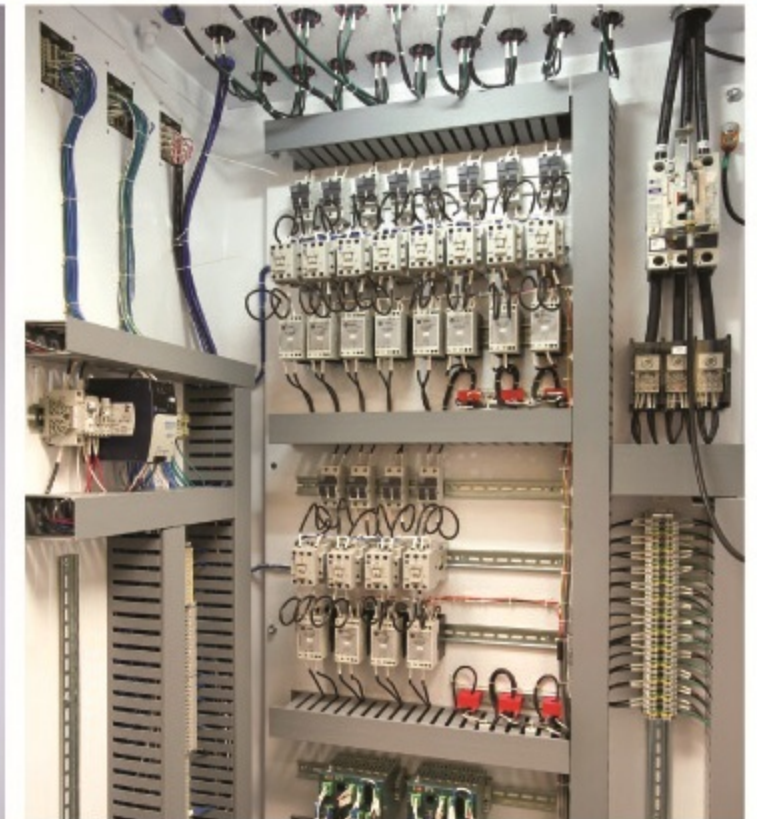


Services and Distribution include:

- Supply and Installation of substations, switchrooms, switchgear, transformer, grounding and overcurrent protection, HV and LV cabling networks, power, lighting, lighting protection and earthing systems.
- Supply and installation of project infrastructure, including HV, MV, LV and ELV cabling and terminations, cable support systems, field devices, control panels and junction boxes.
- Timely sourcing and procurement of equipment and materials to ensure schedule activities are maintained.
- Supply and installation of systems and equipment including hazardous and non-hazardous area control systems, DCS and PLC system, HMI, process indicators, measurement transmitters (pressure, flow, temperature, density, vibration), process control valve and controllers.
- Supply and installation of associated infrastructure, including instrument and control cabling, marshaling panels, instrument junction boxes, instrument air/gas reticulation and impulse line systems.
- Pre-commissioning and commissioning support.

Lighting and Fixtures

- Lamp and ballast replacement
- Emergency exit lights
- Fluorescent Lights
- HID lighting (high bay and wall pack)
- Parking Lots
- Motion sensor, Photocells and Timers
- Motion lights
- Security lights
- Track lights
- Troubleshooting



Special Systems

- Alarm and detection systems
- Telecommunications
- Voice/Data/Video
- UPS system testing
- Standby generators
- Battery power systems
- Cathodic/lighting protection
- Ground fault protection (GFI/GFCI)



E & I Preventive and Predictive Maintenance Service

Yelico also offer the E&I preventive and predictive maintenance service, the program are the key to heading off electrical and data problems before they become expensive. Predictive Maintenance provides the ability to identify problems before they happen and coordinate an orderly repair. Preventive and Predictive Maintenance programs can be customized and performed at convenient hours and during a routine scheduled.



Project Reference

No.	Year	Project Title	Service
1.	May, 1993	Titan Petrochemical Plant Naphtha Cracker Plant (MC 2), Johor	Instrument Calibration, Loop Check & Assist Commissioning. (Manpower supply – 8 persons)
2.	Feb, 1996	Idemitsu Chemicals Johor Ethylbenzen & Styrene Monomer Plant (MSM)	Ancillary Building Services Electrical, Telephone, PA, Fire Fighting & Air Cond System.
3.	May, 1997	APMC – KK4, Ipoh	Electrical & Instrument Installation Work & Assist Commissioning. (Manpower supply – 160 persons)
4.	Dec, 1998	TPP Line 2, Titan Johor	Instrument Installation Works.
5.	Dec, 1999	HDPE Project, Titan, Johor	E & I Installation Work, Calibration & Loop Check Assist Commissioning. (Manpower Supply – 320 persons)
6.	June, 2001	Optimal Project – Infrastructure, Kerteh, Terengganu D.I.	Trouble Shoot, Loop check & Assist Commissioning. (Manpower supply – 16 persons)
7.	Oct, 2001	Idemitsu SM(M) Sdn. Bhd. Pasir Gudang Third Turnaround	Overhaul Control Valve & Safety Relief Valve. Calibration of Pressure, Level & Temperature Tx. Interlock Test for SM, EB & Boiler System.
8.	Oct, 2003	CCM, 2003 Shut Down	Dismantle, Overhaul, Reinstall Control Valve & Instrument Calibration.
9.	Nov, 2004	Chemical Plant, Nanjing, China	Instrument Calibration & Loop Checking. (Manpower Supply – 6 persons)
10.	Oct, 2005	Coal Fired Power Plant, Tg. Bin, Johor	Instrument Calibration, Loop Checking & Assist Commissioning and Start-up.
11.	Sept, 2006	Kemaman Bitumen Plant Refinery	Instrument Calibration, Loop Checking & Assist Commissioning.
12.	Nov, 2008	Labuan Gas, Turbine	Manpower & Test Equipment to commissioning and Start Up Gas Turbine.
13.	Jan, 2011	Dairen Chemical (M) Sdn Bhd, Pasir Gudang Turnaround	Overhaul Control Valve and Safety Relief Valve, Instrument Calibration and Sequence Test for Boiler.
14.	Aug, 2012	MMHE – E, KPOC Project –Virgo Valve	Manual Valve repair valve Seat and Gear Box and hydro Test –400 pcs.
15.	Jan, 2014	Tg. Bin Power Station	E & I Installation Works.
16.	June, 2014	Pahlawan Power Station – Melaka	Shut down Job – Instrument Calibration Works.
17.	Sept, 2014	Synthomer – Polymerlatex Pasir Gudang	Line 1 to Line 5 Shutdown – Safety Relief Valve Servicing & Instrument Calibration.
18.	Dec, 2014	KL–Kepong Oleomas EP4 Project (Plant 10–44, P45 & P46)	Instrument Calibration and Loop Checking.
19.	May, 2015	MMHE Malikai Project – Symphonic Engineering (M) Sdn Bhd	Instrument Calibration Works. (200 Nos)
20.	June, 2014	MMHE SK316 Project – Kumpulan Agresif Sdn Bhd	Ball Valve Hydraulic Test and Overhaul Servicing (200 Nos)



YELICO ENGINEERING SDN. BHD. (431279-W)
9A, Jalan Sena 16, Taman Rinting, 81750 Masai, Johor, Malaysia

Email : admin@yelico.com
Website : www.yelico.com

Tel : +607-386 3316
Fax : +607-386 3317

